



Revision: 1.6 - 06/28/2012

Install Time: 45 Minutes

LA-7590-04B
Softail Lowering Kit Instructions
For 2000+ HD Softail Models only

Page: 1

Installing a lowering kit will decrease initial ground clearance. The motorcycle will be lower to the ground and care should be taken to avoid bottoming, especially over bumps or in turns. To maintain proper balanced geometry, the front and rear of the motorcycle should be lowered equally. Failure to properly install the lowering kit and operate the motorcycle after installation may result in serious injury or death to the rider.

INCLUDED IN THE KIT:

(2) Lowering Nuts	(2) Split Collars
(2) Cup Washers	(2) Urethane Bushings

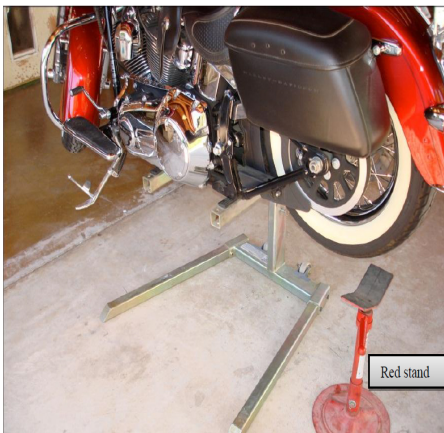
TOOLS REQUIRED:

(1) Motorcycle Lift	(1) 11/16" Wrench
(1) 9/64 Hex Allen Key	(1) 3/4" Wrench

INSTRUCTIONS:

Fits: 2000-2012 H-D Softails

1. Secure the bike on a motorcycle center stand or lift to access the shocks below the frame. The red stand in the picture below is used to lift the rear tire in Step 3.



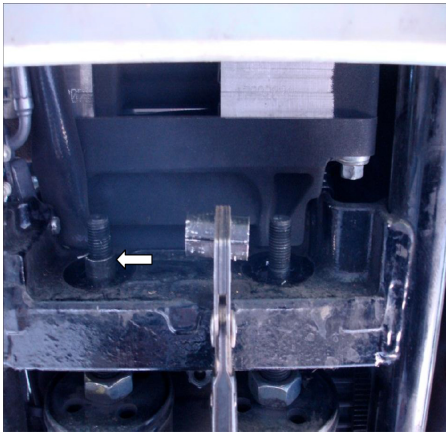
2. Using an 11/16" wrench, remove the shocks front hardware (nut, bushing & cup washer).



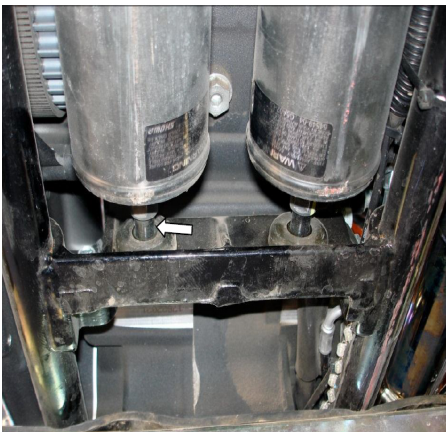
Our install guides provide a basic outline on the proper installation of our products. Further tuning and/or fitment may be required. LA Choppers bears no responsibility on installation costs associated with this product.
© 2024 LA Choppers



There is a sleeve between the two bushings. Remove the sleeve from each side. If it is not removed, the new LOWERING NUT will not seat properly.



3. Raise the rear wheel about three inches. This will pull the shocks back. This will create enough room to install the split collars in Step 4.



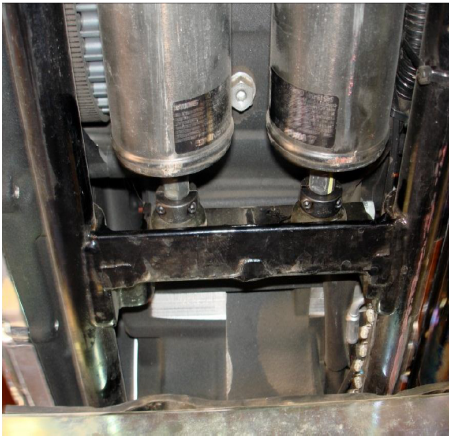
4. Attach a split collar on the shaft of each shock behind the rear bushing cup washer. Use a 9/64" Hex Allen Key and a dab of blue thread locker on the collar bolts. Do not over tighten.



Our install guides provide a basic outline on the proper installation of our products. Further tuning and/or fitment may be required. LA Choppers bears no responsibility on installation costs associated with this product.
© 2024 LA Choppers



Remove the jack from the rear wheel.



5. Assemble the new shock front hardware (bushing, cup washer and new lowering nut shown below). Use thread locker and install the shocks front hardware using a 3/4" wrench. Do not over tighten.



6. Lower bike off center stand. You're done! Ride safe!

WARNING: Installing a lowering kit will decrease initial ground clearance. The motorcycle will be lower to the ground and care should be taken to avoid bottoming, especially over bumps or in turns. To maintain proper balanced geometry, the front and rear of the motorcycle should be lowered equally. Failure to properly install the lowering kit and operate the motorcycle after installation may result in serious injury or death to the rider.

LIMITED GUARANTY: Because we cannot control the application of our products, buyer assumes risks for any and all damage caused to him or herself or any third party by virtue of any failure of these parts. Guaranty for such parts is limited to our replacement costs thereof. This guaranty is in lieu of all other guaranties or warranties express or implied, and all other such guaranties or warranties are hereby expressly disclaimed. By installation of these parts, buyer irrevocably agrees to the foregoing.

Our install guides provide a basic outline on the proper installation of our products. Further tuning and/or fitment may be required. LA Choppers bears no responsibility on installation costs associated with this product.
© 2024 LA Choppers